

# *“A Macroinvertebrate Predictive (RIVPACS) Model for Wadeable Streams of the Western Allegheny Plateau”*

- Sheila H. North, M.S. Student
- Ohio University, EEB Program/BIOS Dept
- US EPA STAR Project Funds, '06-'08





Aquatic insects are  
indicators of stream health

## **Biomonitoring (A Global Perspective)**

- Ohio (early 20<sup>th</sup> century), US (CWA)
- Europe, Australia, UK: predictive, *probability-based* models such as the *River Invertebrate Prediction and Classification System* (RIVPACS)
- Key U.S. scientists strongly recommend testing a RIVPACS-type model for U.S. application in stream restoration techniques
- US EPA & state agencies beginning to use...more exploratory modeling needed!!!



## Recently Developed U.S. Predictive Models

- CA (Hawkins et al 2000)
- MAH & NC (Van Sickle et al 2005)
- OR (Van Sickle et al 2006)
- WY (Hargett et al 2007)
- OH\* (fish – Knapp et al 2005; inverts – Hawkins et al, unpublished)

# What is a Predictive Model?

- Observed:Expected (O/E) ratio based on local reference site taxa (presence/absence – thus no predefined guild categories)
- Localized stressor discrimination
- A potentially powerful means of describing spatial variation



# Why Predictive Modeling?

- Grounded in ecological niche theory
- Taxa replacements (as conditions change)
- Biological assemblages inherently variable in both temporal & spatial settings
- “Biological Integrity” & “Reference Condition” difficult to define
- *EPT not reliable for all impacts!!!*



# Methodology



- Macroinvertebrate WAP dataset (presence/absence) acquired from OEPA (1982-2005) for WAP reference site taxa (H/D sampling, genus/species level – 191 taxa at  $P_c > 0.0$ ; 43 taxa at  $P_c > 0.5$ )
- 80 single-sample reference site sites used for model development; 24 replicate samples selected for model evaluation
- Rare taxa omitted for initial cluster analysis; re-inserted into model for DFM and O:E

## Continued...

- Hierarchical, polythetic, agglomerative cluster analysis (PC Ord v4.0) with Sorenson (Bray-Curtis) distance and flexible beta group linkage method ( $B=-0.25$ )
- Eight classes @ 38% distance remaining; 6-17 WAP reference sites each
- PCA to reduce # of hydrologic variables
- Stepwise DFM to reduce # variables (identify “predictors”) followed by Non-Stepwise DFM on final set

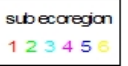


## Distance (Objective Function)

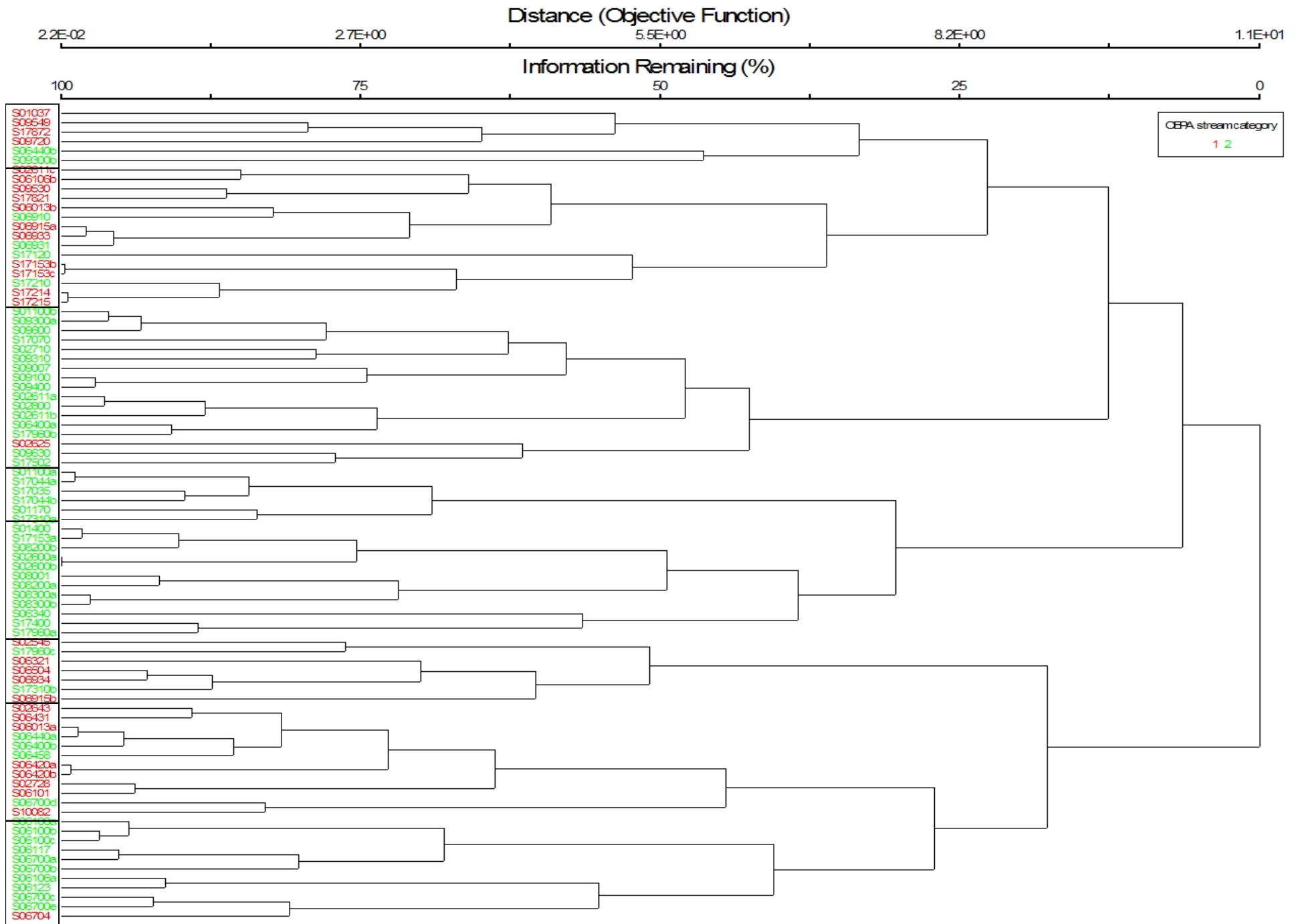
Information Remaining (%)

1.1E+01

0



# STAR Macro Soren Wards Minus Rare Ref 7 10 07



# Possible “Predictor” Variables

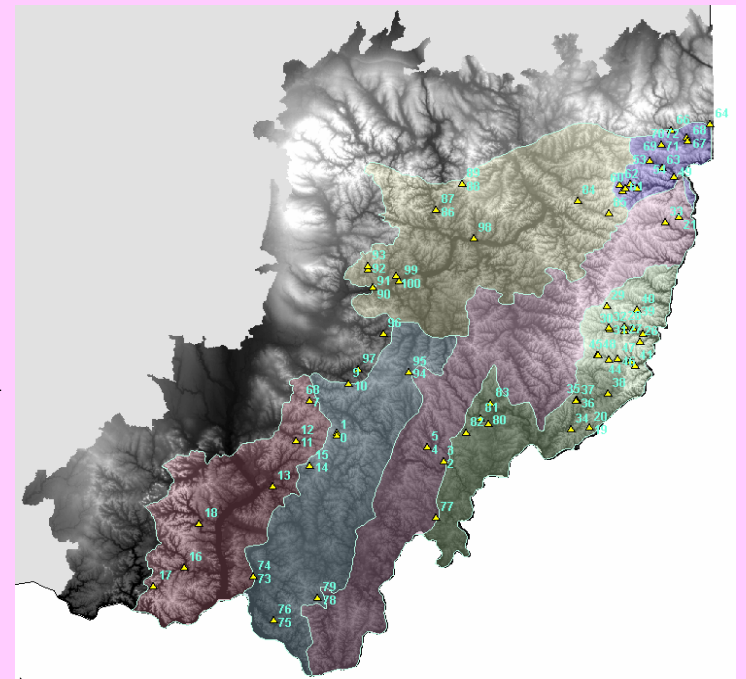
(reduced via DFM/DFA)

Drainage Area; River Mile; Q302 (30 day low-flow with 2 yr R.I., cfs); QP75 (high-flow potential, cfs); Level IV Sub-ecoregion; Stream Category (Headwater or Wadeable); SVI (Stream Variability Index, USGS); QHEI Score (Overall); Substrate; Instream Cover; Channel Morphology; Riparian/Erosion; Pool/Current; Riffle/Run; Stream Gradient (USGS Topo) ; Lat/Long

# Results....

## *Selected Predictor Variables*

- QP75\*
- Latitude
- Level IV Sub-Ecoregion
- Julian Day
- Stream Variability Index



# More Methodology

*Calculated...*

- 1) taxon frequencies for each cluster;
- 2) weighted frequencies;
- 3) Probabilities of Capture for each taxon;
- 4) Observed:Expected ratios (per site); and
- 5) Model validation using 24 replicate year samples.



# Model Accuracy (thus far)

- DFA correctly classified 72 of 80 reference sites
- O:E ratios normally distributed for both model and validation reference sites
- O:E Standard Deviations:

0.20 (model)

0.12 (validation)



# Impaired Sites

## *(Next steps, Spring 2008)*


- Update hydrology data (USGS Streamstats)
- Classify impaired sites according to predictor data (discriminant functions)
- O:E ratio calculation
- Compare ratio distributions (impaired to reference)
- Types of WAP impairment?











Thanks to the  
EPA STAR  
Project Team,  
OU Faculty,  
OEPA, Chuck  
Hawkins, John  
VanSickle, etc...

*Questions?*

- Sheila H. North
- Tel (360) 601-1462
- OU/BIOS/EEB
- Athens, OH
- [sn197796@ohio.edu](mailto:sn197796@ohio.edu)